

Allen Tournament of Champions

(NEW FACILITY)

ROOKIE/NOVICE AND OPEN TOURNAMENT

SATURDAY DECEMBER 8th, 2018 (Double entries allowed)

THIS IS A USA WRESTLING SANCTIONED TOURNAMENT. ALL WRESTLERS MUST HAVE A USA WRESTLING CARD.

Tots, Div. 1, and Girls: *9 AM Start time
Div. 3 and Division 5: *To start no earlier than 10:30 A.M. (This session will start after session one ends)
Div. 2 and 4: *To start no earlier than 1 P.M. (This session will start after 2nd session ends)

LOCATION: Lowery Freshman Center 368 N. Greenville Ave Allen, TX 75013 (there is construction ongoing, do not park in marked fire lanes)

Weights and Divisions

Tots (5 and Under) - 35, 38, 41, 44, 48, 52, 56, 60, HWT*
D-1 (7 and Under) - 38, 42, 46, 50, 55, 60, 65, 72, 80, HWT*
D-2 (9 and Under) - 49, 52, 55, 58, 61, 65, 70, 75, 83, 92, 100, 115, HWT*
D-3 (11 and Under) - 56, 60, 65, 70, 75, 80, 85, 90, 95, 100, 110, 120, 135, HWT*
D-4 (13 and Under) - 70, 75, 80, 85, 90, 95, 100, 110, 120, 130, 142, 155, 175, HWT*
D-5 (15 and Under) - 88, 95, 105, 115, 125, 135, 145, 157, 175, 200, 275 – HWT

Girls Only Division Weights

Madison brackets (we will pair closest weight)
If entering main tournament must double enter

*Maximum of 15 lbs. weight difference for TOTS and D1. 25lbs difference for D2 and D3 and 35lbs maximum difference for D4. All tots and Division 5 are considered open. Weights may be combined to provide more mat time.

Registration: www.trackwrestling.com

Entry Fee: \$17 Entry Deadline: December 7th, 2017 5 PM

Admission Fee for Spectators: \$5 Adults, students are \$3, children 5 and under are free.

Coaches must have USA Wrestling coach's card (in lanyard), for free admission and access to the floor

Awards: Champion T-Shirt (for Open Champions), Medals for 1st – 4th.

Weigh-in Time and Locations:

*****No Saturday Weigh-in all athletes must weigh in Friday night*****

Friday 12/7 from 7 PM – 9 PM Lowery Freshman Center North Gym. Contact: Tournament Director, David Stahl at dave.stahl@verizon.net or 972-896-8790

Remote Weigh-ins

Friday 5-7 PM – 3704 Kell Blvd (Farmers Insurance), Wichita Falls, TX
Contact: Mitch Fields 940-923-9881

Friday 5-6 PM – Guy Mezger Combat Sports Club, 13344 Preston Rd, Dallas, TX 75240
Contact: Rich Ibarra 214-624-8694

Friday: 5.30-7 PM – All Saints Episcopal School, 9700 Saints Circle, Fort Worth, TX 76108
Contact: Lennard Christensen 806-681-6000

Friday: 6-7 PM – Moya Wrestling Club, 2112 S Cockrell Hill Rd., Dallas, TX 75211
Contact: Amy Lara 214-621-5008

Friday: 5-6 PM – Hatcher Wrestling Complex, 410 Ouachita St, Arkadelphia, AR 71913
Contact: Lydia Rogers 870-403-2463

Friday: 6-8 PM – Apex Grappling Academy, 2922 South Goliad Hwy 205, Rockwall, TX 75032
Contact: Troy Mercer 910-723-2330

Friday: 6.30-7.30 PM – 117 Fourth Street, Whitesboro, TX 76273
Contact: Brenton Gabbert 903-821-8015

Friday: 5-6 PM – North Desoto Upper Elementary, US 171, Stonewall, LA 71078
Contact: Dustin Burton 318-617-6188

Friday: 6.30-7.30 PM – Basement at Highland Park High School, access on east side of school across from parking garage, sign on door that you can enter. 4220 Emerson, Dallas, TX 75205
Contact: Tommy Schober 973-365-7053

Friday: 6-7.30 PM – Azle Wrestling Club, 1200 Boyd Rd, Azle, TX 76020
Contact: Justin Berg 817-781-9355

Friday: 6-7.30 PM, 1012 Thannisch Dr, Arlington, TX 76011
Contact: Ty Ryncarz 817-680-2750

Friday: 6-7 PM, Stephenville Wrestling, 804 E Long St, Stephenville, TX
Contact: Alfred Taylor 817-312-5115

Friday: 5-6 PM, River Horse Middle School, 200 College St, Hutto, TX 78664
Contact: Matt Smith (Hippo Wrestling Club) smittyrltw@yahoo.com

Friday: 6-7 PM, The Battlefield/Team Punisher, 1512 I35W, #102, Denton, TX 76207
Contact: Todd Olson 972-657-0278

Friday: 5-5.30 PM, The Woodlands HS, 6101 Research Forest Dr., The Woodlands, TX
Contact: Brad Ewing 785-543-7929

Friday: 5-5.30 PM, Lake Highlands High School Wrestling Room, 9449 Church Rd, Dallas, TX
Contact: Kevin Wainscott 214-534-2700 and David Kjeldgaard 214-223-8366

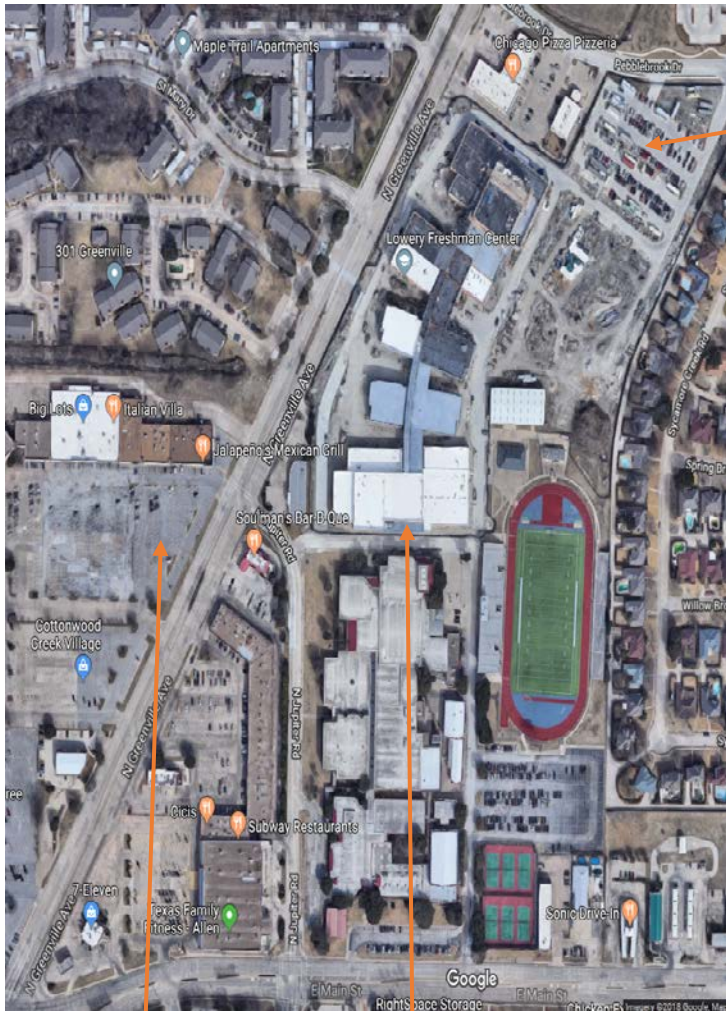
Friday: 6-7 PM, The Hub Nutrition, 1308 N 1st Ave, Durant, OK 74707
Contact: Chaz Polk 580-775-3957

Friday: 6-7 PM, Central High School, 9450 Ray White Rd, Keller, TX
Contact: Bill Wilson 817-999-5919

Friday: 5-5.30 PM, Whitehouse High School, 601 East Main St, Room ATH12, Whitehouse, TX
Contact: Rick Green 903-262-4680

Friday: 6-7 PM, Mansfield Wrestling Club, 2214 HWY 1187, Suite 9-104, Mansfield, TX
Contact: Coach Jameson 214-621-7273

Friday: 5-6 PM, Winnsboro Wrestling Club, 310 West Coke Rd, Winnsboro, TX
Contact: Coach Perez 703-789-2399 or 817-304-1160



Parking

Please note that the parking areas are still under construction. Please do not park in fire lanes or in front of the Greenville side of the school. You may park in the areas designated as parking.

Parking Main Entrance